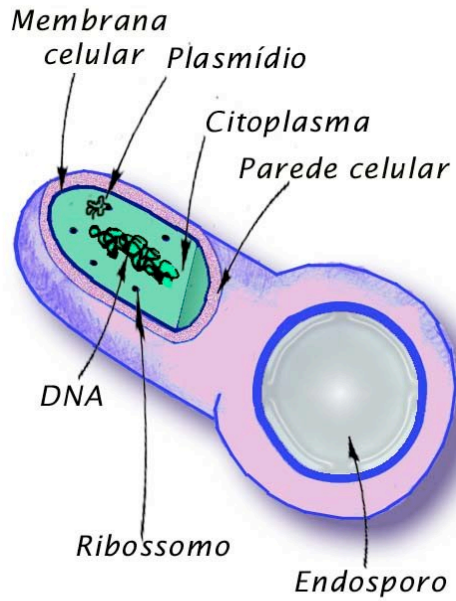
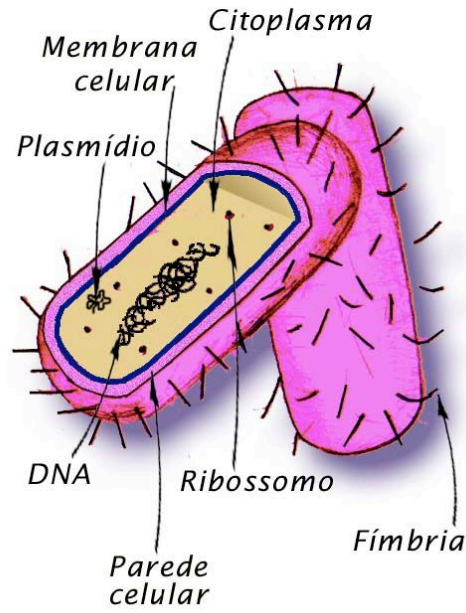


Clostridium tetani



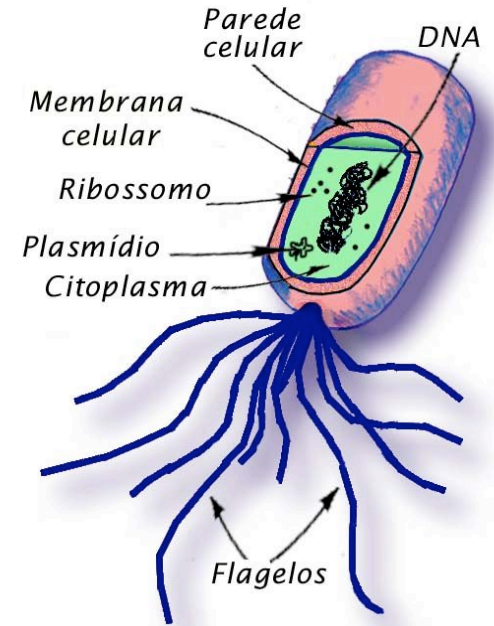
BACTÉRIA

Escherichia coli



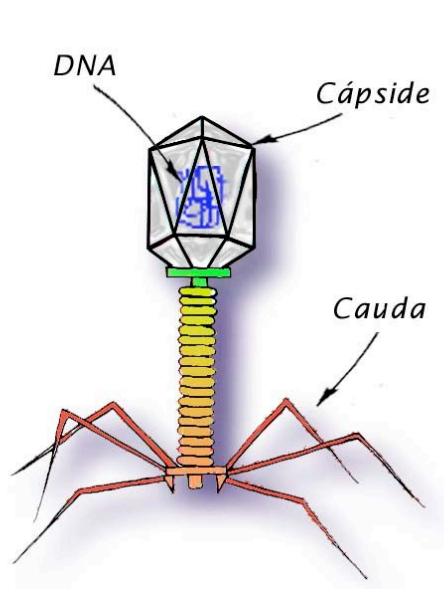
BACTÉRIA

Salmonella typhi



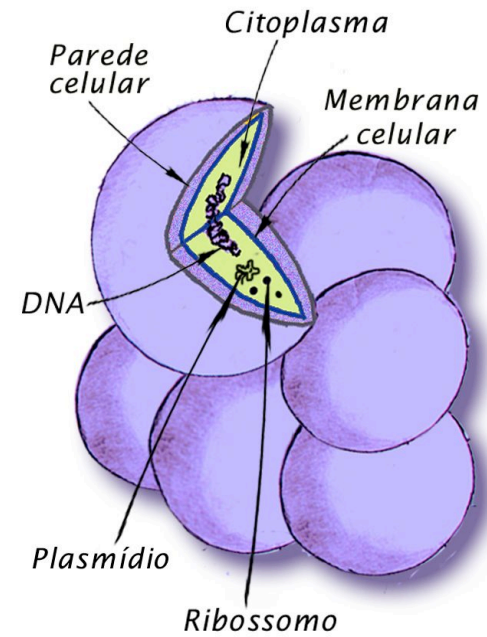
BACTÉRIA

Bacteriófago (T-4)



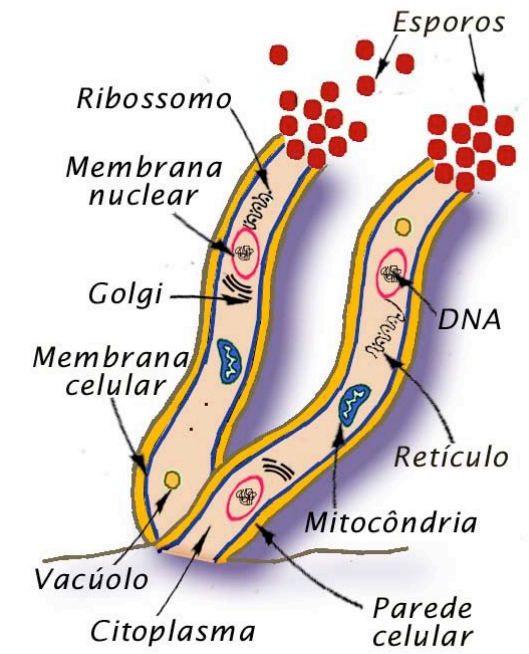
VÍRUS

Staphylococcus sp



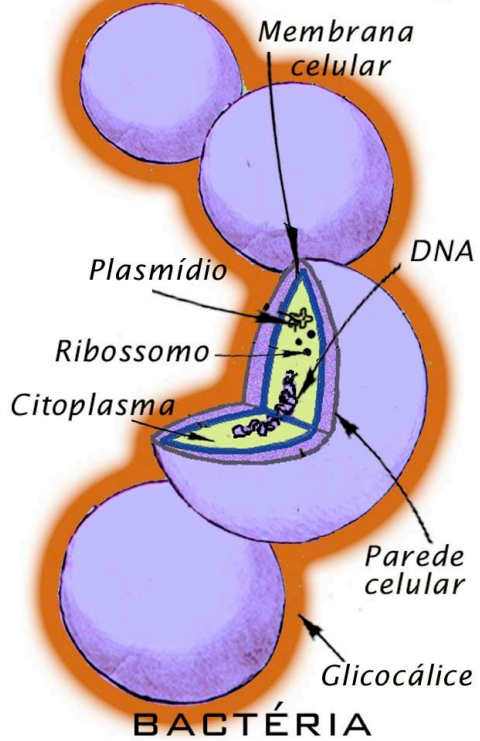
BACTÉRIA

Rhizopus sp

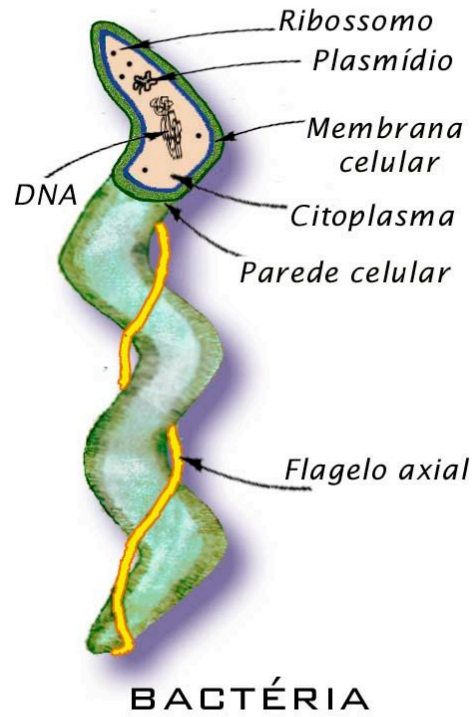


FUNGO

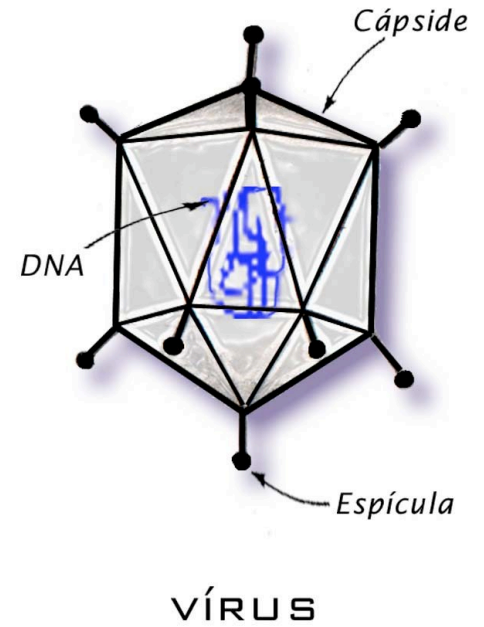
Streptococcus sp



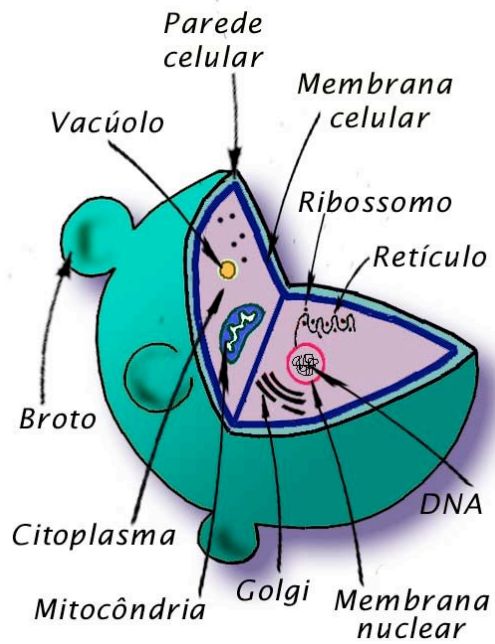
Treponema pallidum



Adenovirus

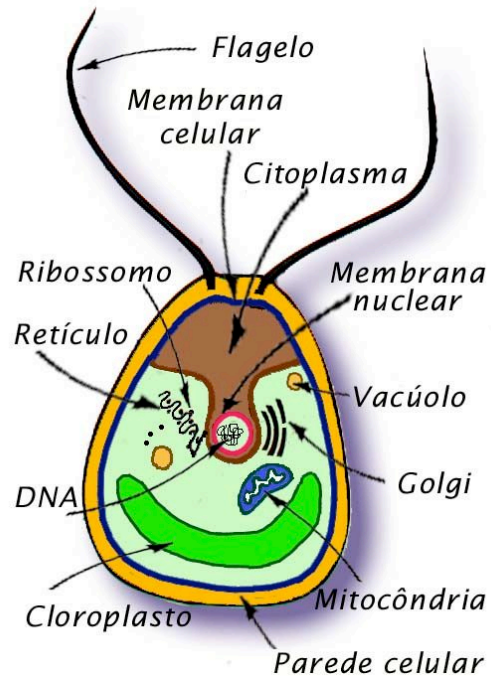


Candida albicans



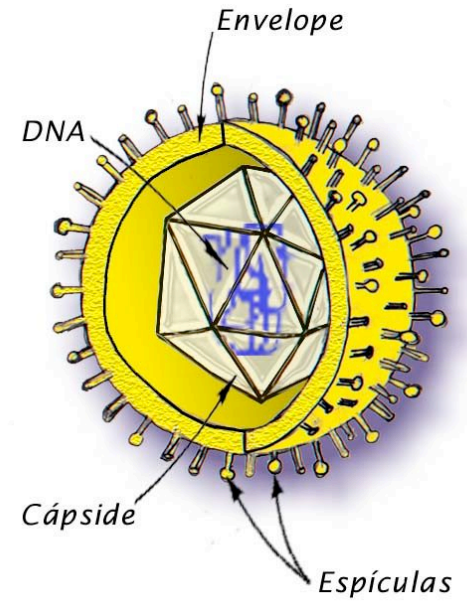
FUNGO

Chlamydomonas sp



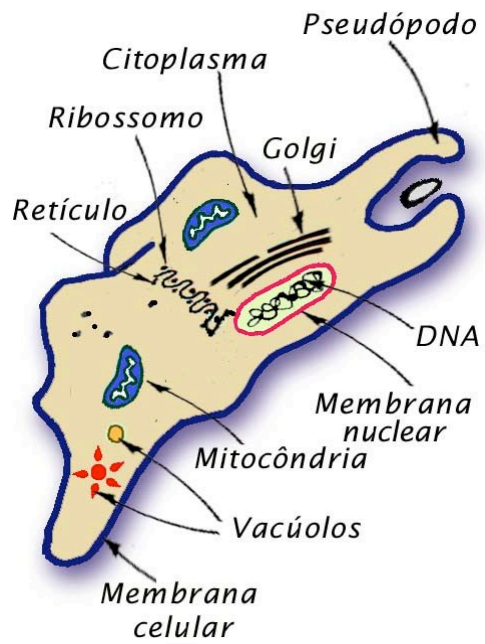
ALGA

Herpesvírus



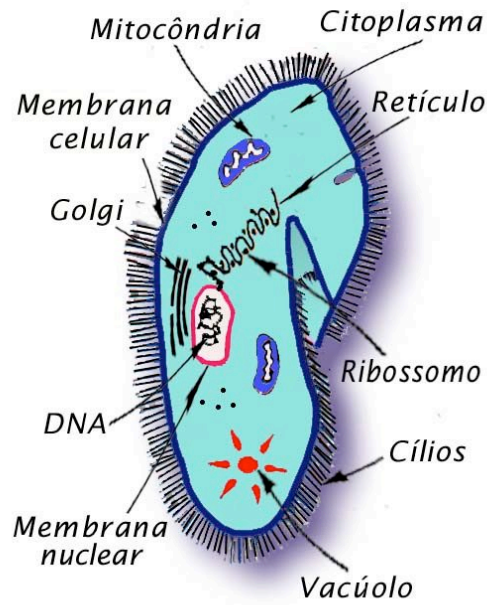
VÍRUS

Entamoeba histolytica



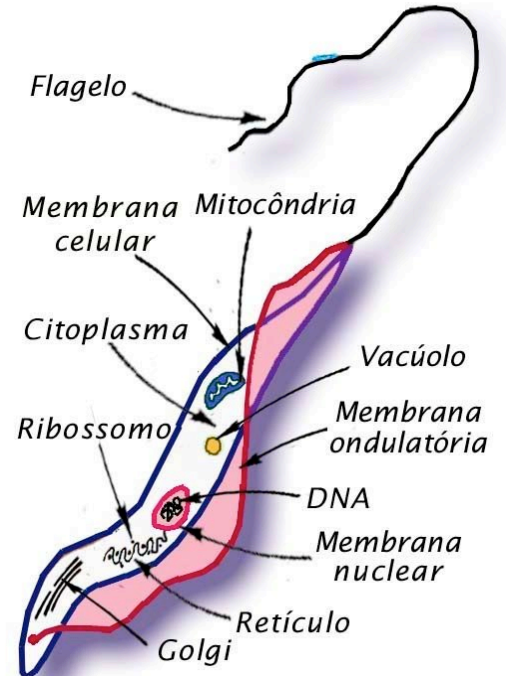
PROTOZOÁRIO

Paramecium sp



PROTOZOÁRIO

Trypanosoma cruzi



PROTOZOÁRIO